



# DZIP3 Polyclonal Antibody

<b>Catalog No</b>	YP-Ab-03832
<b>Isotype</b>	IgG
<b>Reactivity</b>	Human;Rat;Mouse;
<b>Applications</b>	WB;IHC;IF;ELISA
<b>Gene Name</b>	DZIP3
<b>Protein Name</b>	E3 ubiquitin-protein ligase DZIP3
<b>Immunogen</b>	The antiserum was produced against synthesized peptide derived from human DZIP3. AA range:681-730
<b>Specificity</b>	DZIP3 Polyclonal Antibody detects endogenous levels of DZIP3 protein.
<b>Formulation</b>	Liquid in PBS containing 50% glycerol, 0.5% BSA and 0.02% sodium azide.
<b>Source</b>	Polyclonal, Rabbit,IgG
<b>Purification</b>	The antibody was affinity-purified from rabbit antiserum by affinity-chromatography using epitope-specific immunogen.
<b>Dilution</b>	WB: 1/500 - 1/2000. IHC: 1/100 - 1/300. ELISA: 1/40000.. IF 1:50-200
<b>Concentration</b>	1 mg/ml
<b>Purity</b>	≥90%
<b>Storage Stability</b>	-20°C/1 year
<b>Synonyms</b>	DZIP3; KIAA0675; E3 ubiquitin-protein ligase DZIP3; DAZ-interacting protein 3; RNA-binding ubiquitin ligase of 138 kDa; hRUL138
<b>Observed Band</b>	140kD
<b>Cell Pathway</b>	Cytoplasm .
<b>Tissue Specificity</b>	Widely expressed at low level. Highly expressed in skeletal muscle, kidney and heart. Expressed at low level in placenta, lung, brain, liver and pancreas.
<b>Function</b>	function:E3 Ubiquitin ligase proteins mediate ubiquitination and subsequent proteasomal degradation of target proteins. E3 ubiquitin ligases accept ubiquitin from an E2 ubiquitin-conjugating enzyme in the form of a thioester and then directly transfers the ubiquitin to targeted substrates. Able to specifically bind RNA.,pathway:Protein modification; protein ubiquitination.,sequence caution:Contaminating sequence. Potential poly-A sequence.,similarity:Contains 1 RING-type zinc finger.,subunit:Interacts with DAZ proteins.,tissue specificity:Widely expressed at low level. Highly expressed in skeletal muscle, kidney and heart. Expressed at low level in placenta, lung, brain, liver and pancreas.,
<b>Background</b>	function:E3 Ubiquitin ligase proteins mediate ubiquitination and subsequent proteasomal degradation of target proteins. E3 ubiquitin ligases accept ubiquitin from an E2 ubiquitin-conjugating enzyme in the form of a thioester and then



directly transfers the ubiquitin to targeted substrates. Able to specifically bind RNA.,pathway:Protein modification; protein ubiquitination.,sequence caution:Contaminating sequence. Potential poly-A sequence.,similarity:Contains 1 RING-type zinc finger.,subunit:Interacts with DAZ proteins.,tissue specificity:Widely expressed at low level. Highly expressed in skeletal muscle, kidney and heart. Expressed at low level in placenta, lung, brain, liver and pancreas.,

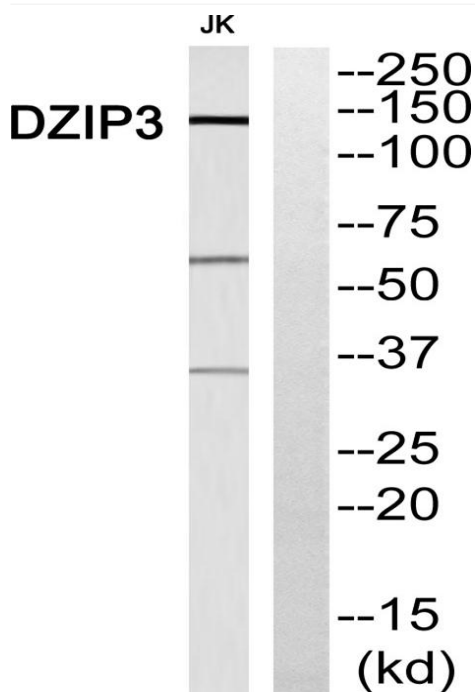
**matters needing attention**

Avoid repeated freezing and thawing!

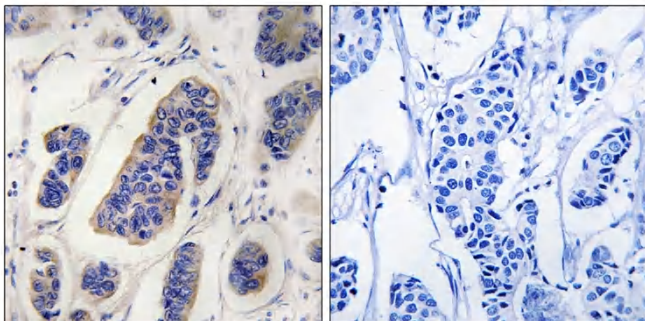
**Usage suggestions**

This product can be used in immunological reaction related experiments. For more information, please consult technical personnel.

**Products Images**



Western blot analysis of DZIP3 Antibody. The lane on the right is blocked with the DZIP3 peptide.



Immunohistochemistry analysis of paraffin-embedded human breast carcinoma, using DZIP3 Antibody. The lane on the right is blocked with the DZIP3 peptide.